



**PRODUCT**  
 30" Double Door Dry Storage Pantry  
**Item No.** DE-DDP30

**DESCRIPTION**  
 Designer Series, Raised Style - 30"  
 Double Door Dry Storage Pantry  
 w/Shelf, Utility Port, & Legs

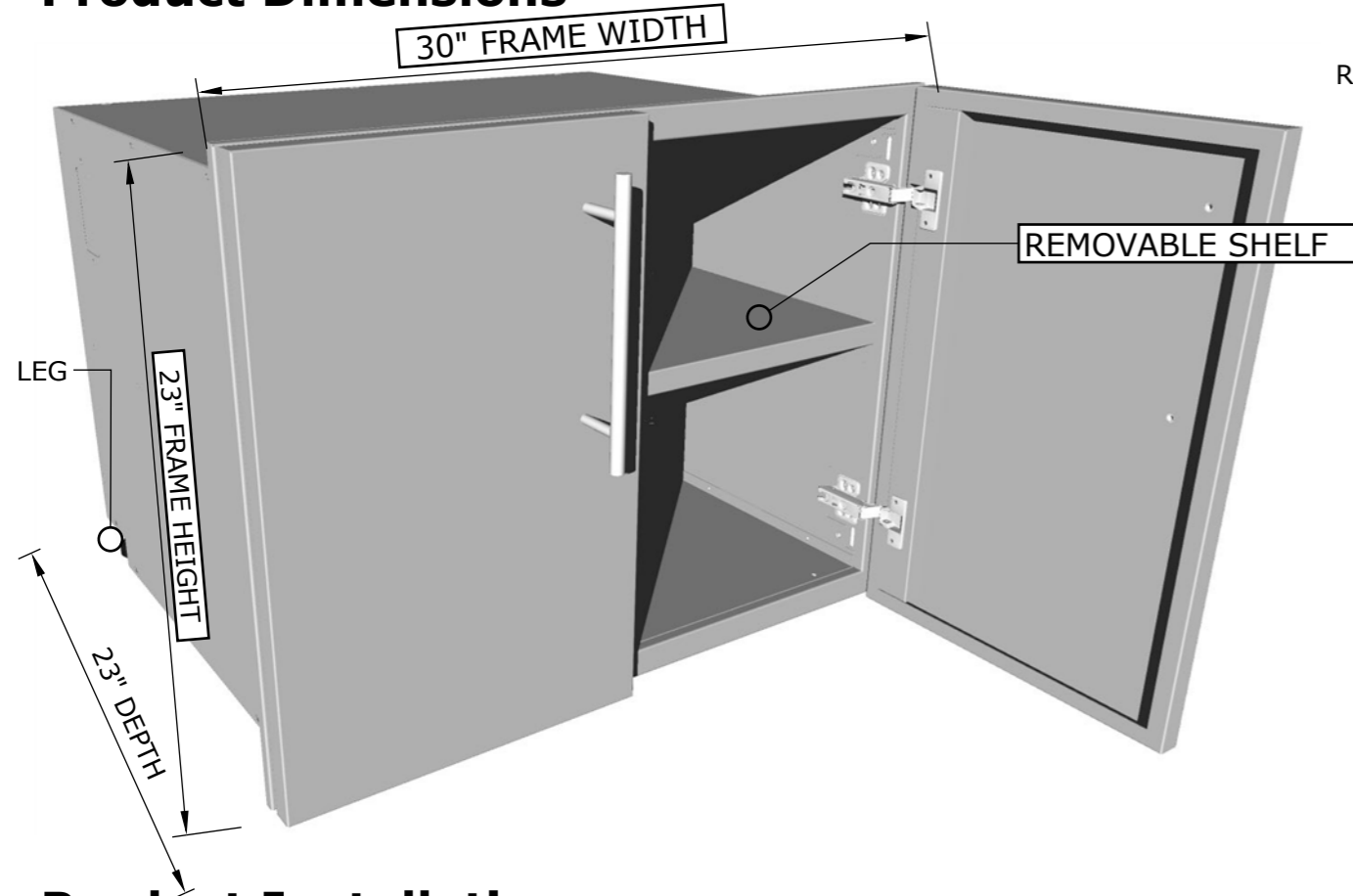
**PRODUCT DIMENSIONS**  
 30" WIDTH x23" HEIGHT x23"  
 DEPTH (PRODUCT SIZE) 28-1/2"  
 WIDTH x21" HEIGHT x22" DEPTH  
 (CUT-OUT)

**SPECIFICATIONS**  
 Door Frame is made from 16 gauge 304 Stainless Steel, and door panel is made from 18 gauge 304 Stainless Steel. Box is made of 18 gauge Galvanized Steel. Handle is Solid 304 Stainless Steel.

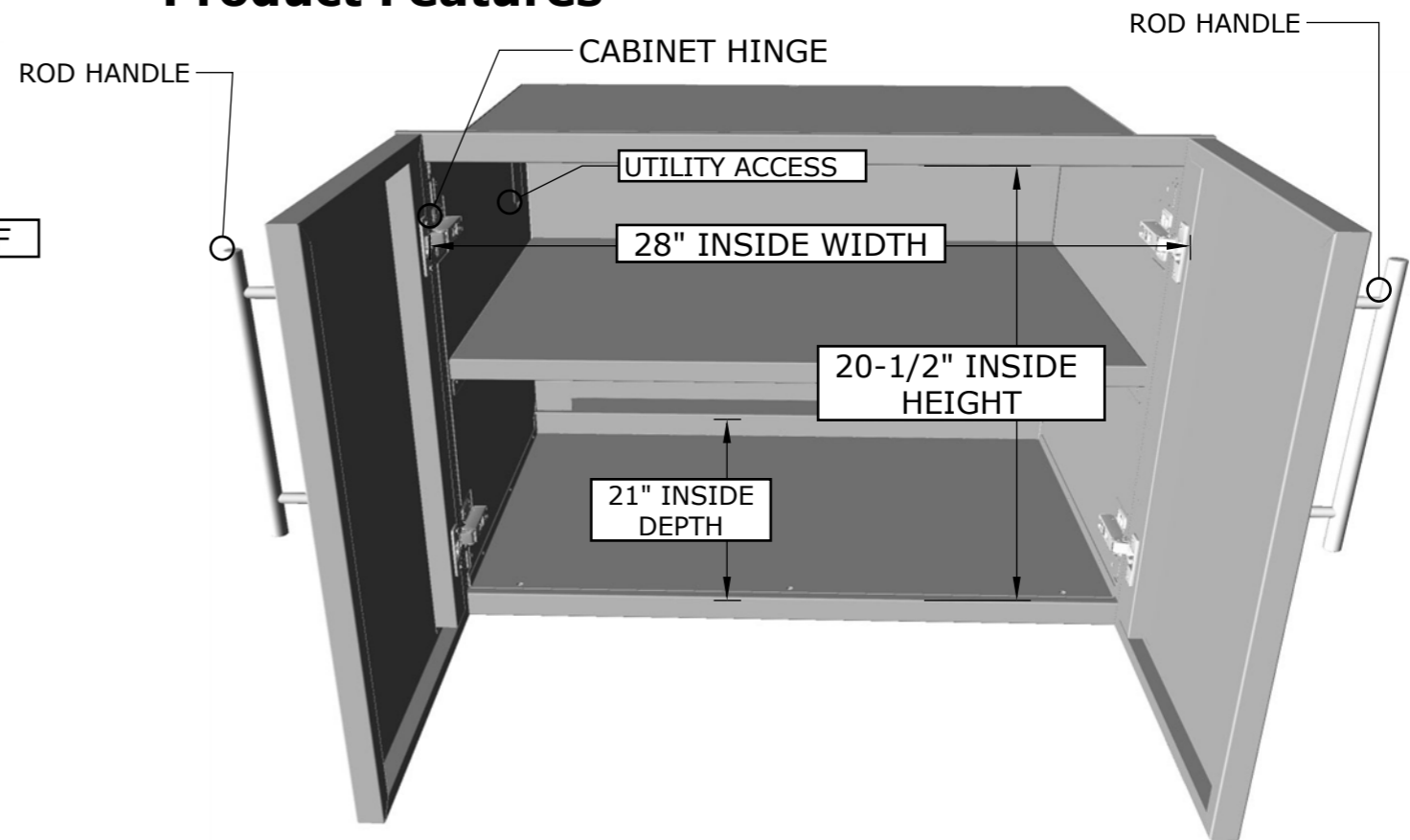
**WARRANTY**

- EXTERIOR FINISH -----3 YEARS
- ROD HANDLES-----3 YEARS
- CABINET HINGE-----1 YEAR
- PEG-LEGS-----1 YEAR

**Product Dimensions**



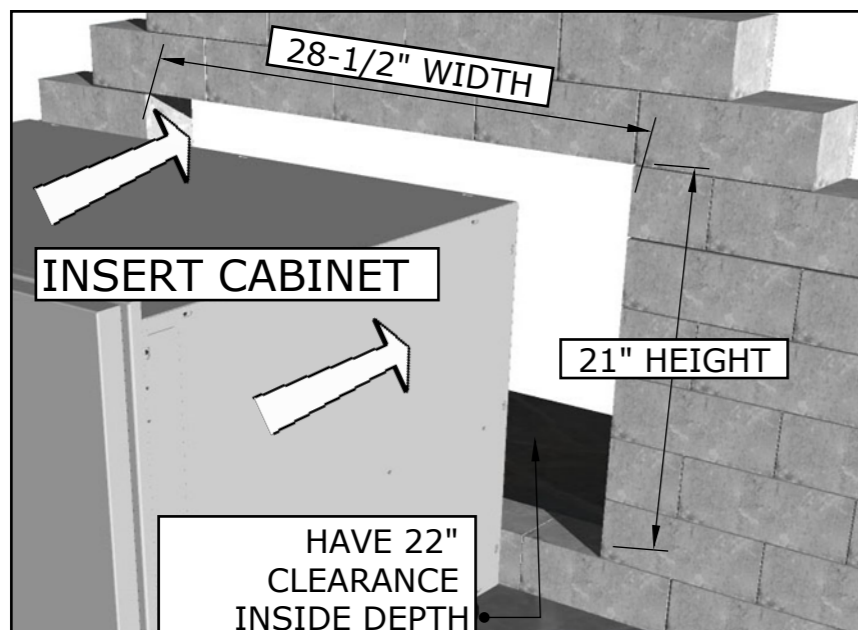
**Product Features**



**Product Installation**

ISLAND WALL CUT-OUT SIZE IS  
 28-1/2" WIDTH BY 21" HEIGHT BY 22" DEPTH

**1 . INSERT COMPONENT**



**IMPORTANT!!** - ROD HANDLES ARE MOUNTED TO INSIDE OF EACH PANEL, YOU MUST UNSCREW EACH ONE AND MOUNT ON OUTSIDE OF DRAWER OR DOOR PANEL.

See SUNSTONE manufacture website for additional product support and product tutorials:  
[www.sunstonemetalproducts.com](http://www.sunstonemetalproducts.com)

**2. MOUNT CABINET TO WALL LOWER LEGS**

